

Activity Report



April 1, 2015 to March 31, 2016

Table of Contents

1.	Message from the Chair of the Forêt Hereford Board of Directors	3
2.	Background.....	4
3.	Board of Directors.....	6
4.	Forestry and Conservation Committee.....	11
5.	Users' Committee.....	12
6.	Highlights of 2015-2016.....	14
7.	Upcoming in 2016-2017.....	21
8.	Global Vision of Forêt Hereford inc.	22
9.	2015-2016 Press Review	25



Forêt Hereford inc. Annual General Meeting, held on June 15, 2015 at the St-Herménégilde Community Centre

1. Message from the Chair of the Forêt Hereford Board of Directors



It gives me great pride to present you with this third annual report of Forêt Hereford inc. highlighting our second full year of operations as the organization managing Hereford Community Forest, a vast estate stretching out over more than 5,600 ha. Our work has only begun, yet already, our projects are multiplying and we are witnessing the emergence of an organization with an approach unlike any other in Quebec.

The year 2015-2016 will have ushered in a wind of renewal for our organization. We have welcomed two new directors, and our two consultative committees have likewise gained new members. Moreover, involvement and supervision have grown; many of you have become our eyes in the field and cherish the integrity of this unique territory.

This year will have been the most eventful yet in our brief existence! Many projects have been undertaken, including our integrated planning and functional zoning initiative, as well as the carbon credit program, the "Pivot forest Project." This last project certainly represents a major investment for our organization, yet it should allow us to expand our conservation efforts. Above all, it will extend beyond our territory and showcase our charitable organization by making the Pivot project accessible to other owners of private woodlots. Also worth mentioning is the implementation of a mountain skiing project, by Circuits Frontières, and the acquisition of FSC Forestry Certification, together with AFA des Sommets.

In concluding, I would be remiss not to mention Hydro-Quebec's interconnection project with New Hampshire. Many hours were invested in 2015-2016 in order to clearly explain our context to the project promoter, and efforts will continue in 2016-2017. Our involvement in planning this project ensures that we follow our obligations to our donors (the Tillotson Family) and our protection-related obligations (guaranteed by the working forest easement, of which the Nature Conservancy of Canada is the fiduciary), while respecting the community dimension of our charitable mission. In closing, I would like to acknowledge once more the many citizens and stakeholders who are committed to the success of this unique community model.

Richard Belleville

Mayor of East Hereford and Chair of the Forêt Hereford inc. Board of Directors

2. Background

Protecting Hereford Community Forest comes under the broader context of maintaining forest connectivity within the natural White Mountain range—a foremost conservation target.

The nearly 5,600 ha territory of Hereford Community Forest is located in the Appalachian mountain chain and makes up most of the mountain tract formed by mounts Hereford, Goblet and Green Goblet. It is nestled within a broader forest area stretching out over some 7,793 ha. Protecting this vast area, unbroken by a network of roads and public paths, is key to maintaining a natural corridor (and hence connectivity) between the large forest tracts on either side of the Canada-U.S. border. The forest area is home to a rich diversity of plants and animals, including several endangered species listed as threatened, vulnerable, or likely to become so in Quebec. Hereford Community Forest also borders three drainage basins.

Its many streams and wetlands are crucial ecosystems for maintaining the quality and quantity of water in these watersheds partly located on the servient tenement, and represent vital habitats for numerous species.

The community forest features three different land tenures:

- The dominant tenement of the working forest easement, which should soon be designated the Neil and Louise Tillotson Nature Reserve, owned by the Nature Conservancy of Canada (approximately 250 ha);
- The servient tenement, owned by Forêt Hereford inc. (approximately 5,000 ha), whose terms of development and protection are stipulated by the easement deed; and
- Surplus properties, also owned by Forêt Hereford inc., which may be developed in various ways in accordance with applicable terms, laws and regulations (approximately 350 ha).

The mission of Forêt Hereford is as follows:

“To own and manage Mount Hereford and its adjacent lands with a view to enhancing the forest’s ecological and wildlife capital so that the property will serve as a self-funded laboratory of integrated natural resource management for the benefit of the community, thereby promoting the forest project and generating spinoffs for residents’ quality of life and for regional development beyond the property’s boundaries.”

The **principles of the community forestry model** that inspired the governance developed for Mount Hereford are as follows:

- The mountain is in the service of the community and the community is in the service of the mountain;
- The community forest is owned and managed by a municipal entity, or a non-profit organization, for the benefit of the communities concerned;
- The acquisition process, management structure, and decision-making process guarantee community participation;
- Community involvement ensures that the forest's ecological and economic benefits are protected and made accessible; and
- The forest's high conservation values are protected on a perpetual basis thanks to the signing of a working forest easement, thus ensuring sustainable forest management.

The mountain is in the service of the community and the community is in the service of the mountain.

In addition to its mission and the principles of its founding model, Forêt Hereford inc. is managed on an everyday basis according to the organization's **charitable purposes**; indeed, its charitable status was decided upon at length in order to be able to receive the forest properties as donations and to be able to maintain the property tax revenues of the municipalities concerned. These purposes imply and require:

- That Mount Hereford be acquired and owned with a view to maintaining the forest's ecological and wildlife balance as well as ensuring the perpetual conservation of its biodiversity;
- That the community forest's ecological riches be highlighted by interpretive panels in order to introduce the public to basic principles and methods of forest conservation and restoration;
- That degraded portions of forest areas be regenerated;
- That basic or applied research be conducted on the forest and on sustainable forest management, and that the resulting findings be disseminated;
- That a trail network be maintained and developed on the site to allow the public to engage in physical activities such as mountain biking, hiking and bird-watching; and
 - That funds be donated to registered charitable organizations ... that conduct applied research on the forest or its plant or animal wildlife.



A large tree, typical of the old forest, preserved over the course of forest restoration works executed in 2015-2016

These charitable purposes are paramount and must guide all of Forêt Hereford inc.'s everyday operations. The activities carried out in 2015-2016 are therefore presented in relation to these charitable purposes.

The organization's governance structure comprises the Forêt Hereford inc. Board of Directors and two consultative committees, namely the Forestry and Conservation Committee and the Users' Committee. In total, in 2015-2016, more than **400 hours** were devoted exclusively to official meetings by the community forest's three governance structures.



Northern dusky salamander, found in the spring of 2016 at a temporary crossing built over a stream in the context of forestry work carried out the previous summer.

3. Board of Directors

Composition of the Board of Directors

Seat No. 1	Representative of the Municipality of East Hereford	Richard Belleville, Chair
Seat No. 2	Representative of the Municipality of Saint-Herménégilde	Gérard Duteau, Director
Seat No. 3	Representative of the MRC of Coaticook	Sara Favreau-Perreault, Secretary
Seat No. 4	Representative appointed by the Board of Directors	Pierre Goulet (as of October 2015)
Seat No. 5	Representative of the Users' Committee	André Desrosiers
Seat No. 6	Representative of the Users' Committee	David Lauzon, Chair of the Users' Committee
Seat No. 7	Representative of the Forestry and Conservation Committee	Lise Beauséjour, Chair of the Forestry and Conservation Committee (as of January 2016) ¹
Seat No. 8	Representative of Regular Members	Daniel Fecteau, Director
Seat No. 9	Representative of Regular Members	François Bouchy-Picon, Vice-Chair

¹ Seat held by Sylvain Lemay from April 2015 to January 2016.

These nine directors are complemented by two professionals:

- Sylvie Harvey, Treasurer
- Dany Senay, Forest Engineer and General manager

Forêt Hereford inc. also relies on the everyday cooperation of the employees of the Coaticook MRC, several of whom are involved in various matters, as well as employees of the municipalities of East Hereford and Saint-Herménégilde.



Police presence in the community forest in the fall of 2015

Between April 1, 2015 and March 31, 2016, the Board of Directors held eight meetings. Following is an overview of the key matters addressed by the Board of Directors and the Director of Forêt Hereford inc. over the past year:

➤ **Owning Mount Hereford with a view to perpetual conservation**

- Agreement of a three-year contract with the General manager of Forêt Hereford inc.;
- Recruitment of a new director appointed by the Board of Directors (Pierre Goulet, former General manager of the Parc national du Mont-Mégantic);
- Administrative structuring (work plan, financial statements, budget forecasts, etc.);
- Agreement to rent out prairies and the garage belonging to Forêt Hereford, on Chemin des Côtes, with Ferme Richard Côté and Linda McDuff;
- Purchase of a roughly 1.5 hectare lot in East Hereford, along Route 253, providing access to approximately 60 hectares of the community forest that were previously inaccessible from the municipal road;
- Finalized sale of the telecommunications tower land at the summit of Mount Hereford to the Centre de services partagés du Québec (public body);
- Installation of a new gate on Chemin Charest;
- Dialogue and discussions with Hydro-Quebec regarding its Quebec - New Hampshire interconnection project, with a focus on protecting and taking into account all the legal and moral interests and obligations of Forêt Hereford;
- Major maintenance work on Sam's Turnpike and restoration of Centennial Drive leading up to the summit of Mount Hereford (overseen by the municipality of

St-Herménégilde, in collaboration with the municipality of East Hereford and the Centre de Services partagés du Québec). More than \$33,000 were invested in the road network in 2015-2016, including \$27,000 by Forêt Hereford;

- Continued ties with the municipalities involved in Hereford Forest, and periodic sending of informative newsletters to elected officials;
- Writing of articles published in local (Mégilien and Fouineur) and regional (Le Crieur public and La Tribune) newspapers;
- Thinking about maple sapling development in the community forest; and
- Follow-up appointment with Tom Dean, the estate executor of Mr. Neil Tillotson (donor of Hereford Forest).



Cleanup of old debris left in Hereford Forest by previous occupations (August 2015)

➤ Highlighting ecological riches

- Installation of display panels at various strategic locations along the community forest;
- Financial support (\$450) to install new interpretive panels on the hiking trail near Donat Falls, developed by the municipality of East Hereford (installed in the summer of 2016);
- Financial support (\$5,000) and professional support of the white-tailed deer inventory project; and
- Enhancement of the Forêt Hereford website and creation of a Facebook page displaying information on current activities and projects as well as the forest's evolution across the seasons.

➤ **Regenerating degraded portions of forests**

- Forestry development and restoration entrusted to AFA des Sommets;
- Updating of dynamic five-year forestry planning with AFA des Sommets;
- Acquisition of FSC Forestry Certification for Forêt Hereford territory, in collaboration with AFA des Sommets, through the group certificate of the Syndicat de producteurs forestiers du Sud du Québec;
- Follow-up and fulfilment of commitments and obligations under the working forest easement on behalf of the Nature Conservancy of Canada.



La marque de la
gestion forestière
responsable

➤ **Conducting basic and applied research on sustainable forest management**

- Implementation of an aquatic salamander inventory project by the Fondation de la Faune du Québec and Université de Sherbrooke;
- Granting of a mandate to CERFO, in collaboration with Université de Sherbrooke, Université Laval and Université du Québec en Outaouais, for the integrated planning project "Developing a resource governance model inspired by the concept of community forests in the United States as part of integrated planning for Hereford Forest," funded by the Ministère de l'Économie, de la Science et de l'Innovation du Québec and Forêt Hereford.
- Development of ties with American community forests



Forestry and restoration works carried out during the winter in a sloped area and in a botanical sector subject to special measures under the working forest easement (February 2016)

and the Northern Forest Center, as in the context of the integrated planning project, in order to enhance the Forêt Hereford governance model and examine possibilities for exporting it elsewhere in Quebec. Approach funded by the Tillotson Fund of the New Hampshire Charitable Foundation;

- Financial analysis and launch announcement for the Pivot forest project, together with Écotierra—the first group project in Canada for a forest carbon credit initiative;
- Signing of a scientific partnership agreement with Université Laval, in the context of the Pivot forest project.



Press conference on September 30, 2015, at Forêt Hereford offices, to announce the acquisition of FSC Forestry Certification and the launch of a new mountain skiing activity

➤ Maintaining and developing a trail network

- Forest access agreement with the Club des Mycologues de l'Estrie;
- Yearly forest access agreement with the Corps des Cadets de Farnham;
- Financial support (\$2,500) and professional support for the mountain skiing development project, implemented by Circuits Frontières;
- Approval for existing recreational infrastructure in permanent agricultural zones, earned from the Commission de protection du territoire agricole du Québec (CPTAQ);
- Improvement of the hiking trail starting from the parking lot on East Hereford's Chemin de Coaticook (by the municipality and its volunteers); and
- Thinking and discussions on the development of new recreational trails as part of the integrated planning project, including thinking about the hiking trail network in St-Herménégilde.



PROJET FORESTIER

4. Forestry and Conservation Committee

The mandate of the Forestry and Conservation Committee is to guide the Board of Directors in matters of biodiversity conservation, the restoration of degraded portions of forests, and sustainable forest management. The topics addressed in the three meetings of the Forestry and Conservation Committee in 2015-2016 were as follows:

➤ Regenerating degraded portions of forests

- Analysis of 2015-2016 and 2016-2017 forestry planning submitted by AFA des Sommets;
- Reflections on the first forest restoration efforts involving the enrichment of tree species that have become scarce or disappeared;
- Discussion on certain forest-related and ecological aspects of the Hydro-Quebec interconnection project; and
- Dialogue regarding follow-up of obligations set out by the working forest easement.

➤ Conducting basic and applied research on sustainable forest management

- Technical analysis and recommendations concerning the integrated planning and functional zoning project submitted by CERFO and partnering universities;
- Examination of an aquatic salamander inventory project by the Fondation de la Faune du Québec and Université de Sherbrooke, and decision on conservation measures for the visited sites;
- Forestry and technical analysis of the Pivot forest carbon credit project; and
- Pooling of land inventory planning for Hereford Forest with regard to threatened or sensitive species.

➤ Maintaining and developing a trail network

- Information and recommendations on projects and initiatives originating from the Users' Committee (new mountain biking trail, white-tailed deer inventory project, etc.).

Composition of the Forestry and Conservation Committee:

- Sylvain Lemay, Association forestière du sud du Québec, former Chair of the Forestry and Conservation Committee (up to January 1, 2016)
- Lise Beauséjour, Agence de mise en valeur de la forêt privée de l'Estrie, Chair of the Forestry and Conservation Committee (as of January 1, 2016) and Committee representative on the Hereford Forest Board of Directors
- Patrice Laliberté, Nature Conservancy of Canada
- Peter Kilburn, Private Forest Consultative Committee of the MRC of Coaticook (unfortunately passed away in September 2015)
- Patrice Bourgault, Université de Sherbrooke (as of February 2016)
- Marie-Claude Bernard, Project Manager – Natural Resources, MRC of Coaticook)
- Vacant Seat, Commission scolaire des Hauts-Cantons (CRIFA)



Winter landscape in Hereford Forest (March 2016)

5. Users' Committee

The Users' Committee is a permanent committee with a flexible composition whose mandate is to help highlight the forest's environmental riches and trail network, as well as to ensure the harmonious cohabitation of users and uses of the territory with a view to making it accessible to the community. The main topics addressed during the four meetings of the Users' Committee in 2015-2016 were as follows:

➤ **Highlighting ecological riches**

- Follow-up on the white-tailed deer monitoring and inventory report by the Hereford fish and game Club.

➤ **Regenerating degraded portions of forests**

- Agreements on measures seeking to harmonize uses of the forest in the context of restoration and sustainable forest management for 2015-2016 and 2016-2017.



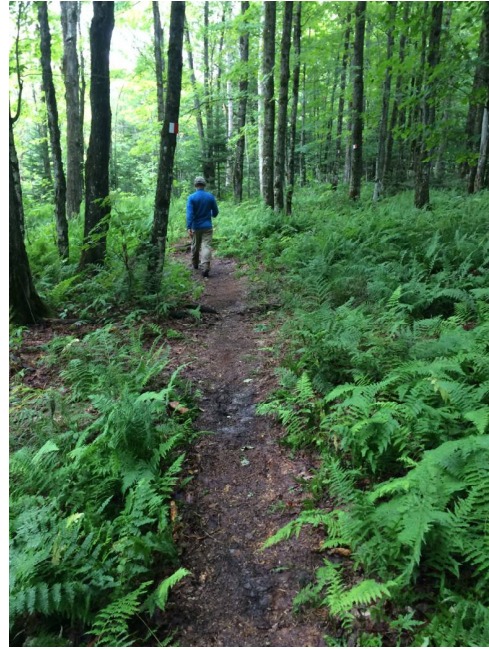
Tour of forestry work in order to confirm measures for cohabitation with mountain biking trails (pictured)
(September 2015)

➤ **Maintaining and developing a trail network**

- Discussions and action plan concerning unauthorized offtrail snowmobiling;
- Discussions and action plan concerning mountain bike management;
- Agreement on closure times during the 2015 and 2016 hunting seasons and memorandum of agreement for the 2017 season;
- Discussions on road access to Hereford Community Forest (gate, road maintenance, access, trail names, etc.);
- Discussions on events organized in summer 2016, in particular the Canadian Mountain Biking Championship (Circuits Frontières); and
- Discussions on the partnership with Mont Expérience Hereford, the future camping and accommodation site bordering Hereford Forest.

Composition of the Users' Committee:

- André Desrosiers, Hereford fish and game Club, Users' Committee representative on the Forêt Hereford Inc. Board of Directors
- David Lauzon, Circuits Frontières, Chair of the Users' Committee and Committee representative on the Forêt Hereford inc. Board of Directors
- Sébastien Desgagnés, Estrie à cheval
- Dominic Arsenault, Club de motoneige Étoile de l'Est
- Jean Massé, Neil Tillotson hiking trail (as of August 2015)



New section of the hiking trail (July 2015), after only a few days of use. An increase in the trails' visitation was recorded in summer 2015.

6. Highlights of 2015-2016

Forêt Hereford inc. and its partners carried out many enhancement and development activities of all kinds across Hereford Community Forest over the course of the year. Following is an overview of key highlights:

➤ **Owning Mount Hereford with a view to perpetual conservation**

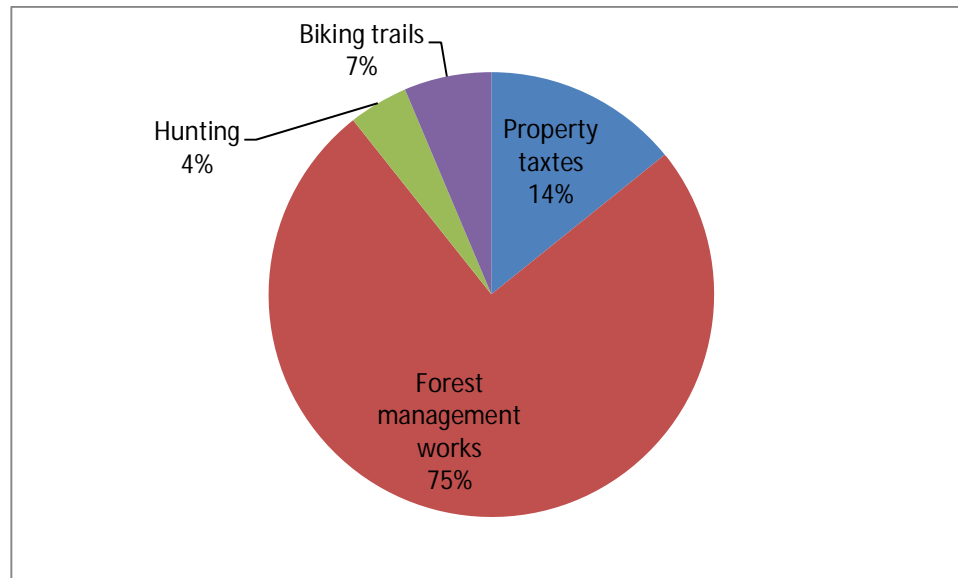
- Forêt Hereford inc. makes it a point to use **local sources** whenever possible. As a result, a number of regional businesses and entrepreneurs benefited from related spinoffs in 2015-2016. The total amounts to several thousand dollars:
 - Aménagement forestier et Agricole des Sommets inc.
 - Brunelle Électronique
 - Daniel Parent, Land Surveyor
 - Foyer du Sport
 - HM Lambert Excavation
 - IGA Coaticook
 - Home Hardware de Coaticook
 - Langlais Sports
 - Marie-Josée Tremblay, Caterer
 - Papeterie Coaticook
 - PC Experts
 - Several local entrepreneurs of various kinds (gate installation, excavation works, etc.)
 - Gas stations

- Transports R. et R. Marquis
 - Variétés Delorme et Filles
 - Taiga Communication
 - Nicole Bouchard, Caterer
- Many hours were invested in protecting the interests of Forêt Hereford in the context of planning the **Hydro-Quebec interconnection project**. The project would involve approximately 10.4 km of power lines in the community forest, as well as the clearing of a maximum of 55 hectares. A number of mitigation measures are currently under discussion, including measures to curb the impact on streams with salamanders, to control the future spread of invasive exotic species, to diminish the total area to be cleared, to lower the impact on forest activities during construction, etc. This is a first for Hydro-Quebec, i.e., planning and modifying one of its projects owing to the presence of a natural area protected by a conservation easement. Moreover, Forêt Hereford must also take into account its own community mission when it comes to the interests defended in the project. Its involvement benefits other owners concerned by the southern portion of the Hydro-Quebec project, and contributes to limiting the visual impact of the power line in the region.
- 2015 **hunting results** for the territory of the Hereford fish and game Club (75% within Hereford Community Forest) follow the same trend as in recent years:
 - Black bears: 4
 - White-tailed deer: 5
 - Moose: 6
- The Hereford fish and game Club continued its area **supervision** activities, and ID cards were produced for supervisors.
- The Club's **hunting and fishing activities** generated significant local spinoffs, while also allowing local residents to engage in a variety of activities.
- The provenance of the Club's members in 2015 was as follows:
 - 88% from the **Eastern Townships**;
 - 6% from the rest of Quebec;
 - 6% from the United States.



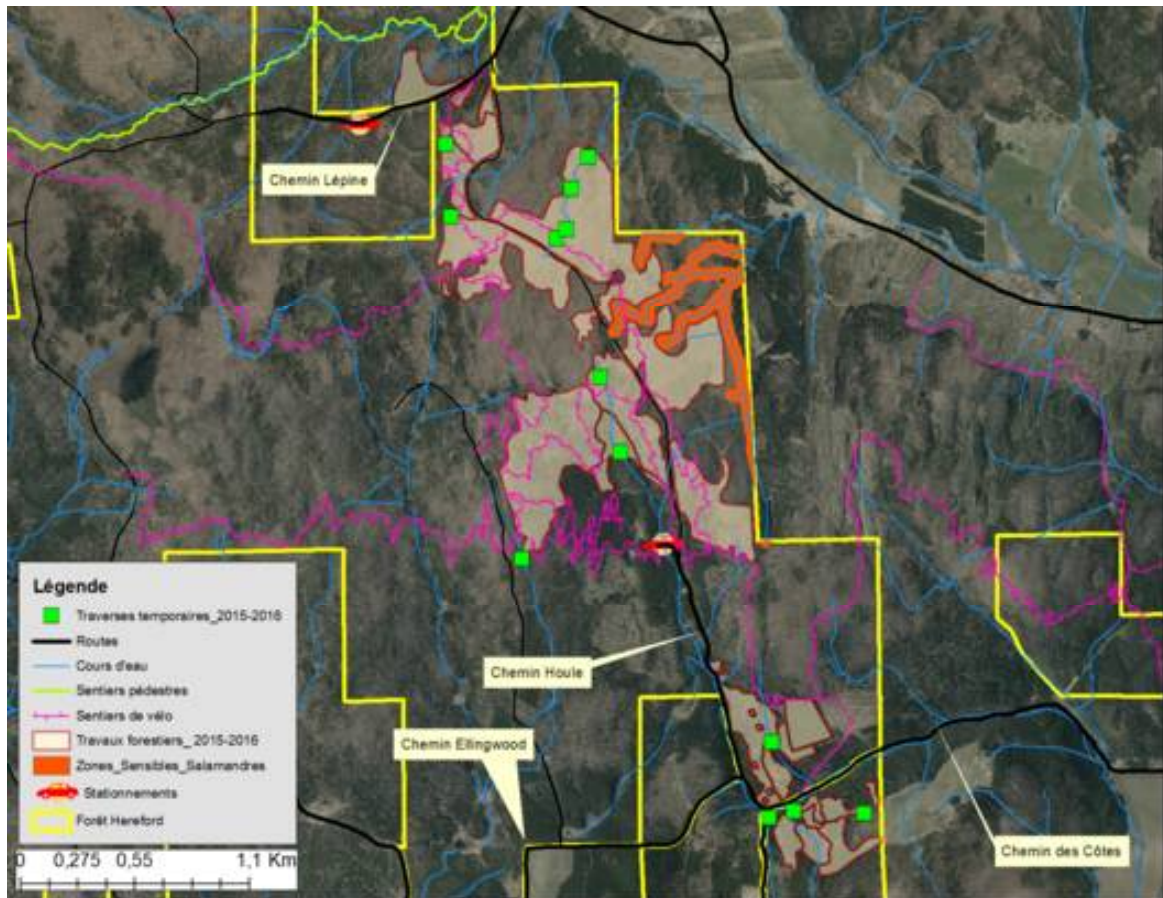
Regeneration of ash trees (in a sector of the 2016-2017 forestry work), which are now more numerous as a result of the decrease in moose density (September 2015)

- In 2015-2016, activities related to the possession and management of Hereford Forest generated more than **\$725,000 in direct economic activity** (not including direct and indirect spinoffs), distributed as follows:



- The **Sûreté du Québec** maintained its presence on the territory and helped keep a watch on Hereford Community Forest as part of its regular duties.
 - Efforts to eradicate **Japanese knotweed**, a highly invasive exotic species, were carried out in August 2015.
- **Regenerating degraded portions of forests**
- During the summer and fall of 2015 and winter of 2016, sustainable forest management and restoration efforts were carried out over 155 ha in the Chemin Houles and Éric area (see map below) by Aménagement forestier et agricole des Sommets (Coaticook).

- This forest restoration work primarily consisted in selective cutting in deciduous and mixed forests and coniferous plantations. Approximately 85% of the areas were subject to tree marking. These efforts involved modifying forest compositions in order to increase diversity and the presence of longlived climax forest, remove dying trees, and preserve ecological features (especially old



Map of forestry work carried out in fall 2015 and winter 2016

forests) and biological features (plant or wildlife habitats). Moreover, efforts to enrich the forest with species that are rarer nowadays (red spruce and white pine) were carried out over the summer of 2014 (Chemin Owen). Finally, hydraulic excavator scarifying was conducted in order to foster the natural and artificial regeneration of yellow birch.

- These forest restoration efforts generated a wood volume of approximately 8,500 m³, with the annual allowable cut of the community forest standing at 11,584 m³. This timber was mainly destined for **regional woodmills** in Coaticook, East Hereford, St-Malo, East Angus and Windsor.
- This sustainable forest management generated **direct spinoffs** of more than \$550,000 for the region. In other words, each developed hectare generated benefits amounting to almost \$3,500.
- The work is also estimated to have contributed to creating and maintaining **15 direct forest- and factory-based jobs**.
- The work was carried out in such a way as to **protect several fragile areas**, including occurrences of wild leek, a botanical zone planned in the working forest easement, protected streams for spring salamanders within the easement, and several



Scarification in order to promote yellow birch regeneration (November 2015)

riparian strips along streams. Almost fifteen temporary crossings were built over

streams by AFA des Sommets in order to be able to haul timber without impacting water courses.

- The forestry work done in 2015-2016 also had to contend with the density of mountain biking paths in the sectors concerned. Novel protection measures were implemented and tested by AFA des Sommets. In this context, a continuous closing and reopening cycle had to be followed by the AFA des Sommets and Circuits Frontières teams.
- Forêt Hereford inc. and the Nature Conservancy of Canada continued to develop their partnership in terms of respecting the working **forest easement**. A number

of matters were addressed collegially, and follow-ups were performed on an ongoing (almost weekly) basis.

- The Nature Conservancy of Canada conducted its **annual tour** of the community forest in June 2015. A number of observations were made and Forêt Hereford followed up on each one.

➤ **Maintaining and developing a trail network**

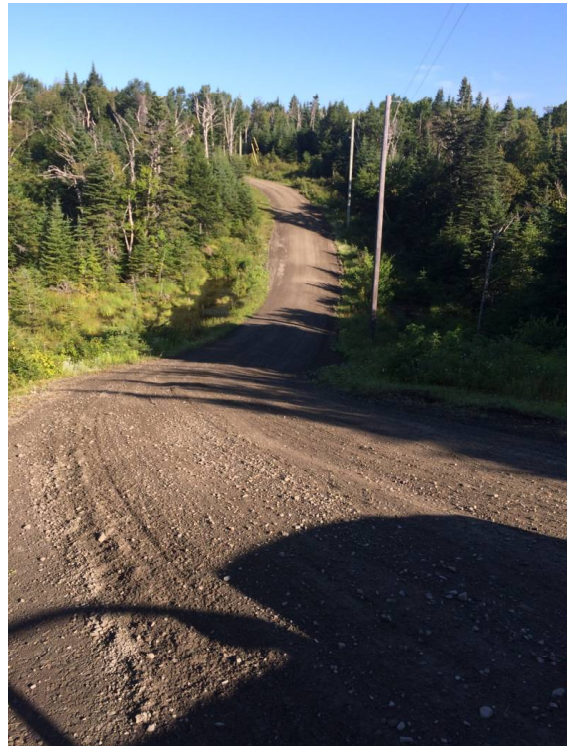
- Circuits Frontières built a permanent overcrossing in order to reduce the negative impacts of a bicycle path for a **stream with salamanders** protected by the forest conservation easement.
- In 2015, Circuits Frontières recorded a **12% increase** in revenues generated by its mountain biking paths, most of which are located in the community forest, making it the best year of operations to date.
- 50% of mountain biking path users in 2015 were from the **Eastern Townships**, followed by the Région de la Capitale-Nationale (12%), Montérégie (11%) and Montreal (10%). These figures represent substantial spinoffs for the region, and show that these recreational and touristic amenities are used by visitors and local residents alike.
- The ninth edition of the **FestivAllezY Jean D'Avignon** was organized by Circuits Frontières on July 24–26, 2015. Nearly 500 cyclist and visitors converged on the community forest and biking paths, making this the largest mountain biking event in the Eastern Townships.
- Circuits Frontières and Forêt Hereford also announced the launch of a new mountain skiing activity during a press conference organized by East Hereford on September 30, 2015. In spite of the deplorable winter in 2016, this new winter offering holds much promise. Minimalist amenities were developed in order to reduce impacts on ecosystems, especially as regards the choice of shrubs that were cleared.
- The recreational and touristic activities



Bike path crossing built in order to protect a stream with salamanders, installed by Circuits Frontières in June 2015.

held in the community forest encourage physical activity and are central to the Three Villages touristic offer. In 2015-2016, the tourism industry generated nearly \$50 million in direct economic benefits across the MRC of Coaticook.² The infrastructures in East Hereford and Saint-Herménégilde are part of this recreational and touristic offer and enjoyed a clear increase in visitation in 2015-2016.

- A number of activities were held at the summit of Mount Hereford, the most visited spot in Hereford Forest: the astronomy event La Tête dans les étoiles (almost 150 participants, organized by the Municipality of St-Herménégilde), the shooting of a short contemporary dance film,³ the activities of the Club de photographie de Coaticook, the lunar eclipse observation night, etc.



Centennial Drive, after improvements overseen by the Municipality of St-Herménégilde (August 2015)

➤ Conducting basic and applied research on sustainable forest management

- Hereford Forest took part in several educational activities at Université de Sherbrooke, including in the fields of applied geometry and biology. Among other things, a talk was given to a group of master's students on the Hereford Community Forest project.

² Source: <http://www.mrcdecoaticook.qc.ca/services/documents/Culture/retombees-economique-tourisme-coaticook.pdf>.

³ <https://www.facebook.com/crackthecypher>

7. Upcoming in 2016-2017

The coming year will be pivotal for several ongoing matters. Following is an overview of the projects planned for the coming year by the team at Forêt Hereford:

- Culmination of the community forest integrated planning and zoning process. Several meetings will be scheduled over the year and a presentation will be made at the June 2017 General Meeting;
- Confirmation of the first carbon credits generated by the Pivot forest project;
- Improved supervision of mountain biking activities;
- Continued development of novel silvicultural and forestry approaches aiming to restore Hereford Community Forest's ecosystems in the long term;
- Assessment of the possibility of hiring a forest ranger;
- Continued thinking about maple sapling development;
- Participation in planning projects seeking to showcase the historical heritage of Hereford Community Forest;
- Continued discussions with Hydro-Quebec regarding the Quebec - New Hampshire interconnection project;
- Organization of an "open door" day for the public at the community forest; and
- Continued efforts involving partnerships with the university community.

8. Global Vision of Forêt Hereford inc.

"A community in the service of a mountain, a mountain in the service of the community"

OUR VISION:

- *A mountain in the service of the community and open to the world, to be promoted and protected for future generations;*
- *A mountain accessible to all, developed in a spirit of respect for the environment, and fulfilling the community's aspirations thanks to exemplary governance;*
- *A mountain featuring a diversity of activities, generating innovative experiences, and contributing to local and regional development.*



Memorial in honour of Mr. Neil Tillotson at the summit of Mount Hereford (credit: Alain Lampron, June 2016)

OUR MISSION:

The mission of Forêt Hereford inc. (FHI) is to own and manage Mount Hereford and its adjacent lands with a view to enhancing the forest's ecological and wildlife capital so that the property will serve as a self-funded laboratory of integrated natural resource management for the benefit of the community. FHI seeks to promote the forest project and its spinoffs for the quality of life of residents in the two municipalities concerned, as well as the benefits for regional development beyond the property's boundaries. To do so, the FHI Board of Directors upholds sustainable management of the territory via the application of best practices in the areas of:

- Forest management;
- Wildlife management;
- Protection of biodiversity and natural features;
- Maple sapling development;
- Extensive recreational activities, such as hiking, mountain biking, and national and regional events related to activities held on the property;
- The hosting of community and educational initiatives; and

- Research geared toward innovation in integrated natural resource management practices for private forests.

GOVERNANCE:

The decisions and actions of Forêt Hereford are taken with a view to sound management of the property, and with a focus on the cooperation of the community and the active participation of the partners sitting on the consultative committees that have been formed, i.e., the Users' Committee and the Forestry and Conservation Committee. The property must be managed transparently in accordance with FHI objectives, and while keeping in mind the established vision, yet without jeopardizing the organization's ability to respect its significant financial and conservation-related obligations. Because it wishes to support regional economic development, FHI will, if it can obtain equivalent competitive rates, encourage the local economy in its purchases and contract-awarding decisions, and will favour the development of local seasonal or regular employment.

COHABITATION WITH USERS:

Forêt Hereford promotes cooperation between users in order to foster their harmonious cohabitation while also respecting biodiversity and the rules and restrictions associated with the working forest easement and the forestry activities that take place on the property. The organization's intent is to make the property accessible to the community for outdoor recreational activities, while following best practices in recreational and tourism management for forest settings. Establishing partnerships, conditions of use, and codes of conduct is essential in order to reconcile the interests of different users.

The organization wishes to offer an enjoyable natural environment for the recreational use of the local, regional and touristic communities. To do so, it focuses on preservation of the forest landscape to ensure that the territory will remain a premiere destination for a variety of enthusiasts. More specifically, the organization aims to:

- Create synergy between users in order to be able to undertake common infrastructure and activity development projects across the territory;
- Offer an open forum for discussion between users in order to contribute to harmonious cohabitation;
- Coordinate the needs and requests of different user groups;
- Develop the territory's potential and manage its recreational and touristic activities in keeping with the forest conservation easement;
- Contribute to area residents' quality of life by providing them with a premiere destination for their various recreational activities; and
- Promote the territory's recreational use to the local and regional community.

SUSTAINABLE FOREST MANAGEMENT:

The aim of FHI is to enhance the forest while preserving its ecological and wildlife balance; to ensure the perpetual conservation of its biodiversity; and to sustainably develop its forestry, wildlife and maple potential consistent with best practices in forestry development and in keeping with the working forest easement, while fostering harmonious cohabitation with other users of the property. More specifically, FHI aims to:

- Plan forest development in the short and long terms by taking into account needs and obligations pertaining to conservation, multiple uses, and socio-economic spinoffs for the property and the region;
- Regenerate the forest with the goal of improving the forest capital via suitable maple initiatives geared toward enriching degraded forest stands with noble and indigenous species, so as to restore and enhance the quality of forest heritage, and via planting including the possible use of monocultures, on an experimental, educational, illustrative and/or profitable basis, within the bounds of areas already identified in the Baseline Documentation Report (BDR) of the working forest easement;
- To ensure the long-term protection and maintenance of the site's biological diversity and other natural values;
- To promote and use rational management and intervention practices in order to ensure sustainable productivity;
- To maintain up-to-date scientific knowledge on the sustainable management of southern forests;
- To initiate or collaborate on research initiatives geared toward innovation in forestry and in integrated private forest resource management;
- To develop infrastructures while taking into account accessibility, service proximity, compliance with regulations, and minimal impacts on biodiversity;
- To establish a smart road network in which the current roads will be improved by developing new sections and resuming the production of certain others (temporary roads);
- To promote maple product potential by adopting best practices in this area of activity and making sure maple sites are developed sustainably;
- To maximize revenues by taking advantage of "allowable cutting" calculated based on criteria compatible with sustainable forest management, by cutting and dedicating wood for the uses that offer the best added value, and by ensuring competitive commercialization; and
- To dialogue with other users with a view to maximizing the synergy of each stakeholder's actions for the benefit of the property (e.g., forest conservation easement, schedule, trails, paths, wildlife habitats, and activities).

9. 2015-2016 Press Review

Forêt Hereford helped organize two press conferences in 2015-2016:

- September 30, 2015: This event, held at the organization's offices in East Hereford, was organized to announce the development of mountain skiing in the community forest, as well as the acquisition of FSC Forestry Certification, in collaboration with Circuits Frontières, AFA des Sommets, and the Syndicat des producteurs forestiers du Sud du Québec.
- December 7, 2015: This launch announcement for the Pivot forestry project, geared toward the production of carbon credits, was held in Sherbrooke, in collaboration with Écotierra.

Hereford Forest was also mentioned in the media regarding the Hydro-Quebec interconnection project with New Hampshire, as well as its recreational and tourism activities during the hunting season. Other articles can also be found in the local newspaper archives of St-Herménégilde (Le Mégilien) and East Hereford (Le Fouineur) from April 2015 to March 2016, as well as in Coaticook's Crieur public.

Following are a few screenshots of media publications on Hereford Forest in 2015-2016.

14 septembre 2015 / La Tribune / MARISÉ CURKONZEAC / marbonneau@latribune.qc.ca

Forêt Hereford en attente

EAST HEREFORD — Propriétaire foncier le plus touché par la nouvelle ligne de transport à courant continu de 320 kV d'Hydro-Québec, Forêt Hereford attendra de connaître l'emplacement exact du tracé retenu avant de se prononcer sur le projet. Organisme gestionnaire d'un domaine de plus de 5400 hectares, incluant le mont Hereford, Forêt Hereford accueillera environ 10 des 18 kilomètres de la nouvelle emprise traversant Saint-Herménégilde et East Hereford.

« Ce n'est que l'unique nous aurons l'ensemble des données auxquelles nous pourrions superposer notre connaissance du territoire et nos projets que nous pourrions statuer sur le projet, déclare Dany Serin, coordonnateur de Forêt Hereford. Pour le moment, tout ce que nous avons demandé à Hydro-Québec, c'est de se tenir le plus loin possible de la Réserve naturelle Neil-et-Louise-Tilbottson afin de créer une zone tampon qui permettra de minimiser les impacts sur ce territoire. Il reste encore beaucoup de choses à découvrir. »

Une préoccupation fondée puisque, selon le tracé retenu, la ligne passera à 60 mètres de la réserve naturelle de 239 hectares, celle-ci étant protégée par une entente de servitude de conservation forestière détenue par Conservation de la nature Canada (CNC). « C'est toute la propriété de Forêt Hereford qui nous tient à cœur, tient à préciser Joël Bonin, directeur de la conservation – Région du Québec. Forêt Hereford est un territoire récréotouristique et ce n'est pas avec des pylônes que l'on attire des touristes et des amateurs de la nature. »

ENFOUISSEMENT?

Outre l'aspect visuel, CNC soulève aussi certains questionnements quant aux traversées de cours d'eau, ainsi que l'enlèvement de la végétation qui fera place à l'emprise. Il faut dire que, spécifiquement pour cette première ligne à 320 kV, Hydro-Québec a pris soin de créer une nouvelle famille de pylônes de moindre dimension, soit 35 mètres au lieu de 40 mètres de haut, avec une emprise de 53 mètres comparativement à 60 mètres. « Comme nous l'avons vu dans d'autres territoires, en règle générale les emprises hydroélectriques sont souvent squattées, un problème difficile à gérer, explique M. Bonin. Dans certains endroits au New Hampshire on a opté pour l'enfouissement de la ligne. Pourquoi n'envisagerait-on pas cette solution au Québec? »

Une certification FSC pour la Forêt Hereford



Les gendres et directeurs de l'association du Forêt Hereford Richard Delsaut et ses collaborateurs (Dany Larnay, Sylvain Larnay, président de l'association Hereford du sud du Québec, Martin Larnay, directeur général du Forêt Hereford des Producteurs forestiers du Sud du Québec, et Sylvain Rigault, directeur général de l'Aménagement forestier et agricole des Sommetz).

territoires forestiers privés certifiés FSC au Québec : le directeur Martin Larnay, directeur général du FPFQ.

Marie-Catherine

La Tribune

«L'AMF HEREFORD» En collaboration avec l'aménagement forestier et agricole des Sommetz (AMF), Forêt Hereford a été joint par 2000 propriétaires forestiers du groupe du Forêt Hereford des producteurs forestiers du Sud du Québec (FPFQ) obtenant la certification forestière FSC (Forest Stewardship Council) une certification internationalement reconnue, laquelle repose sur 10 critères répondant à des préoccupations et des enjeux environnementaux, sociaux et économiques.

Avec l'ajout de la superficie forestière détenue par Forêt Hereford, soit 1400 hectares, la certification du groupe du FPFQ couvre maintenant 1 57 000 hectares. « Il nous faut rester en perspective l'impact positif de cette démarche, puisque le territoire du sud du Québec, qui correspond à l'Estrie et à la Montérégie, couvre 10 % de l'ensemble de la superficie forestière privée au Québec, pour qu'il représente à la fois 11 % des

le Progrès de Coaticook

Le Progrès de Coaticook (1) - Actualités (Actualités 2011)

<http://www.progres.net>

Le mont Hereford accueillera bientôt les skieurs



David Luciani, président de Circuits forestiers, parle le 20 septembre 2011.

PLEIN AIR. Circuits forestiers bonifie son offre hivernale. Les amateurs de plein air seront heureux d'apprendre que le mont Hereford deviendra la première destination officielle de ski de montagne en Estrie.



© Photo: M. Dube - Vincent Dube

Les organisations Forêt Hereford et Circuits forestiers se sont unies pour annoncer deux nouvelles destinations. Sur la photo, de gauche à droite, le maire d'Estrie Hereford, Richard Delsaut, le directeur général d'Aménagement forestier et agricole des Sommetz, Sylvain Rigault, le président de Circuits forestiers, David Luciani, et le directeur du Comité des producteurs forestiers du sud du Québec, Martin Larnay.

L'annonce en a été faite lors d'une conférence de presse tenue conjointement avec Forêt Hereford, le matin (20 septembre).

Le ski de montagne est bien différent du ski alpin. Pour atteindre le sommet du mont Hereford, les skieurs doivent emprunter des sentiers avant de descendre les pentes. « On revient à l'origine du ski alpin, fait savoir le président de Circuits forestiers, David Luciani. Avant qu'on ait les moyens de gravir les sentiers pentes, les gens qui voulaient les sensations avec un sport de glisse devaient graver la montagne pour la redécouverte. C'est un peu rétrograde à cette époque du ski. On se rappelle aussi de la nature et on peut ainsi pleinement profiter de la beauté des paysages ».

Ski de fond et ski alpin y trouveront leur compte. On se fait qu'il y a un tapis synthétique avec l'équipement, ce qui permet de glisser dans un sens et dans l'autre sans avoir à monter une pente. Pour les fans de ski de fond, une piste qui se situe en haut, pour aller les skis, est offerte.

Renouer avec le ski d'arrière-pays

EAST HEREFORD – Le mont Hereford se prépare à être l'hôte cet hiver d'un attractif récréationnisme unique en France, le ski de montagne. Une activité qui rappelle aux amateurs originels de l'hiver le ski et qui connaît un essor important au Québec depuis quelques années.



« Avec son sommet offrant une vue remarquable sur les vallées de l'Est et les Montagnes Bleues géologiques, ainsi qu'un dénivelé positif de 400 mètres sur deux versants, le potentiel du mont Hereford pour la pratique du ski de montagne est exceptionnel », partage Pierre Richard, l'initiateur du projet. Le grand potentiel du site Hereford repose sur son caractère sauvage et authentique, au sein de la forêt communautaire Hereford. Plus qu'une activité sportive, le mont Hereford propose une manière de vivre l'hiver en symbiose avec la nature.

Côté technique, le ski de montagne se pratique à l'aide de deux types d'une paire d'équipement associant le bâton dans la neige communément appelée « pous de pous » ou « pous de la mort » le ski de montagne est une pratique technique. Les skieurs partent avec de l'équipement technique, le ski de montagne est une pratique technique. Les skieurs partent avec de l'équipement technique, le ski de montagne est une pratique technique. Les skieurs partent avec de l'équipement technique, le ski de montagne est une pratique technique.

« La ski de montagne, c'est de profiter autant de la montagne que de la descente en évitant les bâtons de l'air des grands versants de ski, partage David Leveson, président de l'Association Française d'Initiation au Ski de Montagne. Comme il n'y a aucun risque de la neige, le ski d'été offre le premier à découvrir les sentiers dans le parc forestier après une tempête. Pour moi, c'est le bonheur ».

(A NOTER, DEUX SENTIERS)

Forêt Hereford: la priorité donnée aux chasseurs en 2015

EAST HEREFORD – Contrairement l'an dernier, tous les sentiers de randonnée et de vélo au mont Hereford seront fermés pour la saison de la chasse, soit du jeudi 24 septembre au vendredi 16 octobre et du vendredi 30 octobre au dimanche 15 novembre inclusivement. Toutefois, contrairement à l'an dernier, les sentiers ne seront pas exceptionnellement ouverts pour le conseil de l'Action de grâce qui prendra place cette année le 12 octobre.

« D'ouvrir les sentiers seulement pour une fin de semaine amenant des conflits un peu plus difficiles à gérer sur le terrain, explique Dany Senay, coordonnateur de Forêt Hereford. Cette année, nous avons choisi de maintenir les sentiers fermés, mais pour acheter le prix nous envisageons d'attirer en ouvrant les sentiers une année sur deux. C'est un exemple de compromis qui ne fait malheureusement jamais la bonheur de tout le monde. Pour que tout le monde gagne un peu, tout le monde doit perdre un peu. »

CONTEXTE PARTICULIER

Il faut dire que le contexte de Forêt Hereford est particulier, notamment parce que la gestion du domaine de plus de 5400 hectares repose sur une cohabitation harmonieuse des usages. Le site offre d'ailleurs un grand nombre d'activités plein air (vélo de montagne, randonnées pédestres et équestres, mycologie, ornithologie, ski de montagne et raquette), tout en offrant un accès aux activités de récréation, ainsi qu'à la chasse et la pêche via le Club de chasse et pêche Hereford.

« Ce qui ne nous aide pas, c'est que les dates de chasse sont décidées par le ministère de la Forêt, de la Faune et des Parcs. On subit le calendrier, déplore M. Senay. Mais nous ne sommes pas les seuls. Dans les Cantons du Nord, on développe un produit d'appel qu'est la randonnée et quand vient le temps de profiter de la belle saison avec les couleurs, la chasse vient compromettre le tout. Je ne suis pas si c'est culturel, mais nos visiteurs américains réussissent à faire réhabiliter en même temps chasse et randonnée. »

Rappelons que l'accès au sommet par le chemin carrossable Centennial demeure ouvert en tout temps.

Education reform bill
elicits more
questions than

1999, 2000, 2001, 2002, 2003, 2004, 2005, 2006, 2007, 2008, 2009, 2010, 2011, 2012, 2013, 2014, 2015, 2016, 2017, 2018, 2019, 2020, 2021, 2022, 2023, 2024, 2025, 2026, 2027, 2028, 2029, 2030, 2031, 2032, 2033, 2034, 2035, 2036, 2037, 2038, 2039, 2040, 2041, 2042, 2043, 2044, 2045, 2046, 2047, 2048, 2049, 2050, 2051, 2052, 2053, 2054, 2055, 2056, 2057, 2058, 2059, 2060, 2061, 2062, 2063, 2064, 2065, 2066, 2067, 2068, 2069, 2070, 2071, 2072, 2073, 2074, 2075, 2076, 2077, 2078, 2079, 2080, 2081, 2082, 2083, 2084, 2085, 2086, 2087, 2088, 2089, 2090, 2091, 2092, 2093, 2094, 2095, 2096, 2097, 2098, 2099, 2100, 2101, 2102, 2103, 2104, 2105, 2106, 2107, 2108, 2109, 2110, 2111, 2112, 2113, 2114, 2115, 2116, 2117, 2118, 2119, 2120, 2121, 2122, 2123, 2124, 2125, 2126, 2127, 2128, 2129, 2130, 2131, 2132, 2133, 2134, 2135, 2136, 2137, 2138, 2139, 2140, 2141, 2142, 2143, 2144, 2145, 2146, 2147, 2148, 2149, 2150, 2151, 2152, 2153, 2154, 2155, 2156, 2157, 2158, 2159, 2160, 2161, 2162, 2163, 2164, 2165, 2166, 2167, 2168, 2169, 2170, 2171, 2172, 2173, 2174, 2175, 2176, 2177, 2178, 2179, 2180, 2181, 2182, 2183, 2184, 2185, 2186, 2187, 2188, 2189, 2190, 2191, 2192, 2193, 2194, 2195, 2196, 2197, 2198, 2199, 2200, 2201, 2202, 2203, 2204, 2205, 2206, 2207, 2208, 2209, 2210, 2211, 2212, 2213, 2214, 2215, 2216, 2217, 2218, 2219, 2220, 2221, 2222, 2223, 2224, 2225, 2226, 2227, 2228, 2229, 2230, 2231, 2232, 2233, 2234, 2235, 2236, 2237, 2238, 2239, 2240, 2241, 2242, 2243, 2244, 2245, 2246, 2247, 2248, 2249, 2250, 2251, 2252, 2253, 2254, 2255, 2256, 2257, 2258, 2259, 2260, 2261, 2262, 2263, 2264, 2265, 2266, 2267, 2268, 2269, 2270, 2271, 2272, 2273, 2274, 2275, 2276, 2277, 2278, 2279, 2280, 2281, 2282, 2283, 2284, 2285, 2286, 2287, 2288, 2289, 2290, 2291, 2292, 2293, 2294, 2295, 2296, 2297, 2298, 2299, 2300, 2301, 2302, 2303, 2304, 2305, 2306, 2307, 2308, 2309, 2310, 2311, 2312, 2313, 2314, 2315, 2316, 2317, 2318, 2319, 2320, 2321, 2322, 2323, 2324, 2325, 2326, 2327, 2328, 2329, 2330, 2331, 2332, 2333, 2334, 2335, 2336, 2337, 2338, 2339, 2340, 2341, 2342, 2343, 2344, 2345, 2346, 2347, 2348, 2349, 2350, 2351, 2352, 2353, 2354, 2355, 2356, 2357, 2358, 2359, 2360, 2361, 2362, 2363, 2364, 2365, 2366, 2367, 2368, 2369, 2370, 2371, 2372, 2373, 2374, 2375, 2376, 2377, 2378, 2379, 2380, 2381, 2382, 2383, 2384, 2385, 2386, 2387, 2388, 2389, 2390, 2391, 2392, 2393, 2394, 2395, 2396, 2397, 2398, 2399, 2400, 2401, 2402, 2403, 2404, 2405, 2406, 2407, 2408, 2409, 2410, 2411, 2412, 2413, 2414, 2415, 2416, 2417, 2418, 2419, 2420, 2421, 2422, 2423, 2424, 2425, 2426, 2427, 2428, 2429, 2430, 2431, 2432, 2433, 2434, 2435, 2436, 2437, 2438, 2439, 2440, 2441, 2442, 2443, 2444, 2445, 2446, 2447, 2448, 2449, 2450, 2451, 2452, 2453, 2454, 2455, 2456, 2457, 2458, 2459, 2460, 2461, 2462, 2463, 2464, 2465, 2466, 2467, 2468, 2469, 2470, 2471, 2472, 2473, 2474, 2475, 2476, 2477, 2478, 2479, 2480, 2481, 2482, 2483, 2484, 2485, 2486, 2487, 2488, 2489, 2490, 2491, 2492, 2493, 2494, 2495, 2496, 2497, 2498, 2499, 2500, 2501, 2502, 2503, 2504, 2505, 2506, 2507, 2508, 2509, 2510, 2511, 2512, 2513, 2514, 2515, 2516, 2517, 2518, 2519, 2520, 2521, 2522, 2523, 2524, 2525, 2526, 2527, 2528, 2529, 2530, 2531, 2532, 2533, 2534, 2535, 2536, 2537, 2538, 2539, 2540, 2541, 2542, 2543, 2544, 2545, 2546, 2547, 2548, 2549, 2550, 2551, 2552, 2553, 2554, 2555, 2556, 2557, 2558, 2559, 2560, 2561, 2562, 2563, 2564, 2565, 2566, 2567, 2568, 2569, 2570, 2571, 2572, 2573, 2574, 2575, 2576, 2577, 2578, 2579, 2580, 2581, 2582, 2583, 2584, 2585, 2586, 2587, 2588, 2589, 2590, 2591, 2592, 2593, 2594, 2595, 2596, 2597, 2598, 2599, 2600, 2601, 2602, 2603, 2604, 2605, 2606, 2607, 2608, 2609, 2610, 2611, 2612, 2613, 2614, 2615, 2616, 2617, 2618, 2619, 2620, 2621, 2622, 2623, 2624, 2625, 2626, 2627, 2628, 2629, 2630, 2631, 2632, 2633, 2634, 2635, 2636, 2637, 2638, 2639, 2640, 2641, 2642, 2643, 2644, 2645, 2646, 2647, 2648, 2649, 2650, 2651, 2652, 2653, 2654, 2655, 2656, 2657, 2658, 2659, 2660, 2661, 2662, 2663, 2664, 2665, 2666, 2667, 2668, 2669, 2670, 2671, 2672, 2673, 2674, 2675, 2676, 2677, 2678, 2679, 2680, 26

The members of the two bands, including the three who founded each, will perform on October 10, 1991, at the University of Illinois, Urbana-Champaign. Although a temporary, one-time reunion, the event is being planned around its anniversary.

The study was approved by the Institutional Review Boards of the University of Illinois at Chicago and the University of Maryland. All participants gave informed consent.

These findings suggest that the model is a promising tool for understanding the complex interactions between the environment and the human body. The model is currently being used to study the effects of various environmental factors on human health, and the results are promising. The model is also being used to study the effects of various human factors on the environment, and the results are also promising. The model is a valuable tool for understanding the complex interactions between the environment and the human body, and it is a promising tool for studying the effects of various environmental factors on human health.

The interviewers following the brief about the use of technology and the issues that arise in their own work, as the interview topic guide, and the issues that arise in their own work, as the interview topic guide, and the issues that arise in their own work, as the interview topic guide.

These results suggest that the current study would represent a significant step forward in the development of a more effective and comprehensive set of tests that could allow the testing of a full set of hypotheses related to the hypothesis.

These results indicate that the use of the proposed model can be used to predict the effect of the use of the proposed model on the performance of the system. The results also indicate that the use of the proposed model can be used to predict the effect of the use of the proposed model on the performance of the system.

Sherbrooke-based carbon capture project a Canadian first



100

When the 1970s energy crisis was in full swing, a group of people called themselves the Energy Research Council. They were not a formal organization, but a loose coalition of scientists and engineers who were concerned about the future of energy. They met regularly to discuss the latest developments in energy research and to share their ideas. They were the Energy Research Council.

© 2005 The Authors
Journal compilation © 2005 Blackwell Publishing Ltd
Journal of Internal Medicine 258: 1–12

According to Richard Stone, a consultant to the government, the fact that the private sector is not doing the job that government is supposed to do is not a surprise.

© 2004 Blackwell Publishing Ltd, *Journal of Internal Medicine* 255: 105–112

As a result, the company is now in a position to offer a more complete range of services to its customers. The company is also in a position to offer a more complete range of services to its customers. The company is also in a position to offer a more complete range of services to its customers.

[illegible]

© 2006 by W. B. Saunders Company. All rights reserved. This journal is the property of W. B. Saunders Company. No part of this publication may be reproduced, stored in a retrieval system, or transmitted, in any form or by any means, electronic, mechanical, photocopying, recording, or by any information storage or retrieval system, without prior written permission from W. B. Saunders Company. Printed in the United States of America. 0000-0000/06/0000-0000\$10.00/0

Projet Pivot : premier projet carbone forestier groupé au Canada



Energy Storage: Investment in Power generation
Renewable Energy: positive response



Abstract

«*Le Travailleur*», 1921, 1922, 1923, 1924, 1925, 1926, 1927, 1928, 1929, 1930, 1931, 1932, 1933, 1934, 1935, 1936, 1937, 1938, 1939, 1940, 1941, 1942, 1943, 1944, 1945, 1946, 1947, 1948, 1949, 1950, 1951, 1952, 1953, 1954, 1955, 1956, 1957, 1958, 1959, 1960, 1961, 1962, 1963, 1964, 1965, 1966, 1967, 1968, 1969, 1970, 1971, 1972, 1973, 1974, 1975, 1976, 1977, 1978, 1979, 1980, 1981, 1982, 1983, 1984, 1985, 1986, 1987, 1988, 1989, 1990, 1991, 1992, 1993, 1994, 1995, 1996, 1997, 1998, 1999, 2000, 2001, 2002, 2003, 2004, 2005, 2006, 2007, 2008, 2009, 2010, 2011, 2012, 2013, 2014, 2015, 2016, 2017, 2018, 2019, 2020, 2021, 2022, 2023, 2024, 2025, 2026, 2027, 2028, 2029, 2030, 2031, 2032, 2033, 2034, 2035, 2036, 2037, 2038, 2039, 2040, 2041, 2042, 2043, 2044, 2045, 2046, 2047, 2048, 2049, 2050, 2051, 2052, 2053, 2054, 2055, 2056, 2057, 2058, 2059, 2060, 2061, 2062, 2063, 2064, 2065, 2066, 2067, 2068, 2069, 2070, 2071, 2072, 2073, 2074, 2075, 2076, 2077, 2078, 2079, 2080, 2081, 2082, 2083, 2084, 2085, 2086, 2087, 2088, 2089, 2090, 2091, 2092, 2093, 2094, 2095, 2096, 2097, 2098, 2099, 2100, 2101, 2102, 2103, 2104, 2105, 2106, 2107, 2108, 2109, 2110, 2111, 2112, 2113, 2114, 2115, 2116, 2117, 2118, 2119, 2120, 2121, 2122, 2123, 2124, 2125, 2126, 2127, 2128, 2129, 2130, 2131, 2132, 2133, 2134, 2135, 2136, 2137, 2138, 2139, 2140, 2141, 2142, 2143, 2144, 2145, 2146, 2147, 2148, 2149, 2150, 2151, 2152, 2153, 2154, 2155, 2156, 2157, 2158, 2159, 2160, 2161, 2162, 2163, 2164, 2165, 2166, 2167, 2168, 2169, 2170, 2171, 2172, 2173, 2174, 2175, 2176, 2177, 2178, 2179, 2180, 2181, 2182, 2183, 2184, 2185, 2186, 2187, 2188, 2189, 2190, 2191, 2192, 2193, 2194, 2195, 2196, 2197, 2198, 2199, 2200, 2201, 2202, 2203, 2204, 2205, 2206, 2207, 2208, 2209, 2210, 2211, 2212, 2213, 2214, 2215, 2216, 2217, 2218, 2219, 2220, 2221, 2222, 2223, 2224, 2225, 2226, 2227, 2228, 2229, 2230, 2231, 2232, 2233, 2234, 2235, 2236, 2237, 2238, 2239, 2240, 2241, 2242, 2243, 2244, 2245, 2246, 2247, 2248, 2249, 2250, 2251, 2252, 2253, 2254, 2255, 2256, 2257, 2258, 2259, 2260, 2261, 2262, 2263, 2264, 2265, 2266, 2267, 2268, 2269, 2270, 2271, 2272, 2273, 2274, 2275, 2276, 2277, 2278, 2279, 2280, 2281, 2282, 2283, 2284, 2285, 2286, 2287, 2288, 2289, 2290, 2291, 2292, 2293, 2294, 2295, 2296, 2297, 2298, 2299, 2300, 2301, 2302, 2303, 2304, 2305, 2306, 2307, 2308, 2309, 2310, 2311, 2312, 2313, 2314, 2315, 2316, 2317, 2318, 2319, 2320, 2321, 2322, 2323, 2324, 2325, 2326, 2327, 2328, 2329, 2330, 2331, 2332, 2333, 2334, 2335, 2336, 2337, 2338, 2339, 2340, 2341, 2342, 2343, 2344, 2345, 2346, 2347, 2348, 2349, 2350, 2351, 2352, 2353, 2354, 2355, 2356, 2357, 2358, 2359, 2360, 2361, 2362, 2363, 2364, 2365, 2366, 2367, 2368, 2369, 2370, 2371, 2372, 2373, 2374, 2375, 2376, 2377, 2378, 2379, 2380, 2381, 2382, 2383, 2384, 2385, 2386, 2387, 2388, 2389, 2390, 2391, 2392, 2393, 2394, 2395, 2396, 2397, 2398, 2399, 2400, 2401, 2402, 2403, 2404, 2405, 2406, 2407, 2408, 2409, 2410, 2411, 2412, 2413, 2414, 2415, 2416, 2417, 2418, 2419, 2420, 2421, 2422, 2423, 2424, 2425, 2426, 2427, 2428, 2429, 2430, 2431, 2432, 2433, 2434, 2435, 2436, 2437, 2438, 2439, 2440, 2441, 2442, 2443, 2444, 2445, 2446, 2447, 2448, 2449, 2450, 2451, 2452, 2453, 2454, 2455, 2456, 2457, 2458, 2459, 2460, 2461, 2462, 2463, 2464, 2465, 2466, 2467, 2468, 2469, 2470, 2471, 2472, 2473, 2474, 2475, 2476, 2477, 2478, 2479, 2480, 2481, 2482, 2483, 2484, 2485, 2486, 2487, 2488, 2489, 2490, 2491, 2492, 2493, 2494, 2495, 2496, 2497, 2498, 2499, 2500, 2501, 2502, 2503, 2504, 2505, 2506, 2507, 2508, 2509, 2510, 2511, 2512, 2513, 2514, 2515, 2516, 2517, 2518, 2519, 2520, 2521, 2522, 2523, 2524, 2525, 2526, 2527, 2528, 2529, 2530, 2531, 2532, 2533, 2534, 2535, 2536, 2537, 2538, 2539, 2540, 2541, 2542, 2543, 2544, 2545, 2546, 2547, 2548, 2549, 2550, 2551, 2552, 2553, 2554, 2555, 2556, 2557, 2558, 2559, 2560, 2561, 2562, 2563, 2564, 2565, 2566, 2567, 2568, 2569, 2570, 2571, 2572, 2573, 2574, 2575, 2576, 2577, 2578, 2579, 2580, 2581, 2582, 2583, 2584, 2585, 2586, 2587, 2588, 2589, 2590, 2591, 2592, 2593, 2594, 2595, 2596, 2597, 2598, 2599, 2600, 26

Les participants au projet pourront se familiariser avec plusieurs de ces pratiques éducatives et pédagogiques (voir les liens de consultation dans les annexes).

À l'exception de l'organisme financé par 100 % par cette initiative, 19/26 bénéficiaires comme le groupe « projet jeunesse Bonheur groupé au Canada », les parents et d'âge suffisamment pour obtenir les documents et l'adhésion les pas d'être de ceux à leur service.

Le projet vise la rupture et la réduction de plus de 25 000 tonnes de CO₂ équivalent par année dans la première phase de l'investissement, ainsi qu'attendu à terme de cinquante millions de tonnes de CO₂ équivalent.

© Ce journal peut, sans autorisation, être réutilisé en interne par les propriétaires des journaux d'abonnement, sous une certaine forme papier, les graphies et/ou, en complément de l'abonnement, sous une forme électronique, sous réserve d'indiquer la source d'origine.

[illegible]

Abstract. 11/9 has got a effect on sports (Olympic) during the month immediately before the event, a de-differentiation on the day of competition and on the day after.

Health Insurance & Retirement and access to services to help a woman's business.